

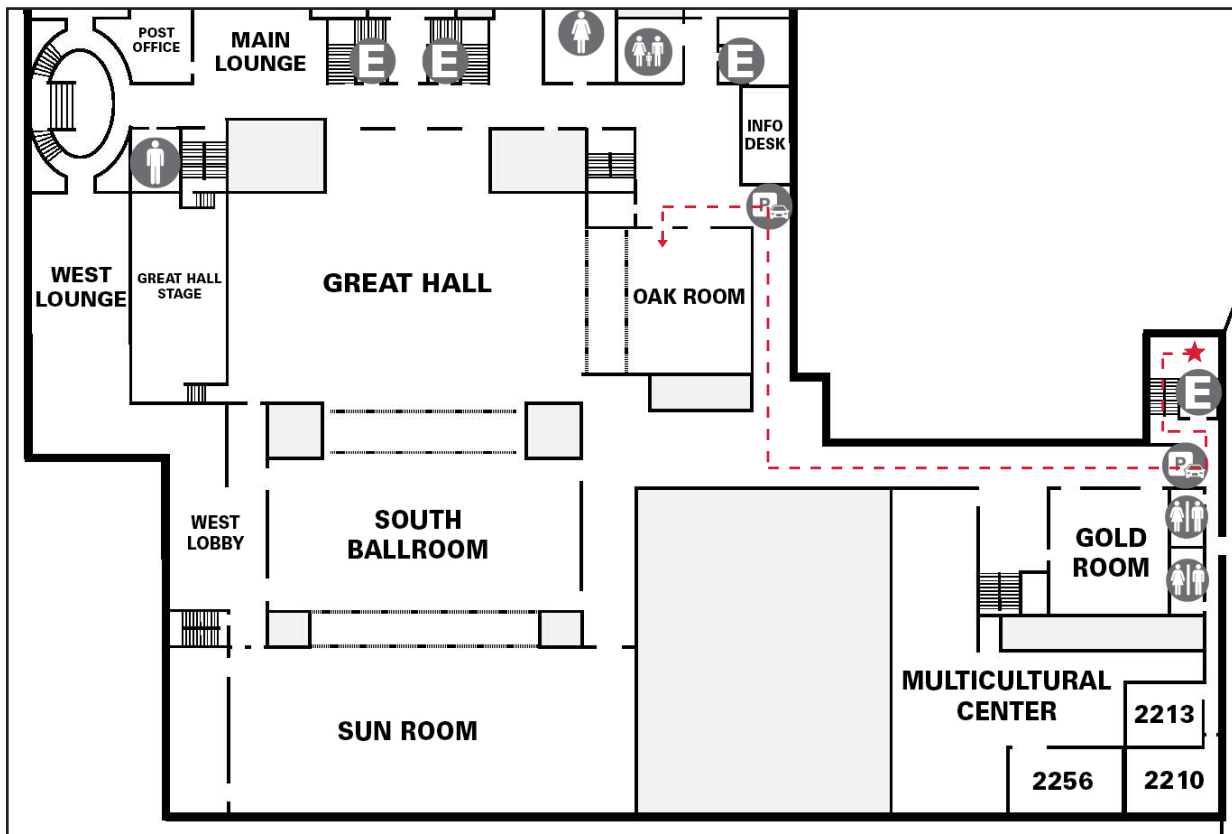
IOWA STATE UNIVERSITY

Directions to Campus Visit Program

Once you have parked in the Memorial Union parking ramp:

- Enter the stair tower located on the west side of the parking ramp (look for the sign on the window marked 'Enter Memorial Union Here').
- Take the stairs or elevator to level P2 of the stair tower and enter the building on Level 2.
- Proceed through the building (on Level 2), following the signs directing you to the program.

Level 2

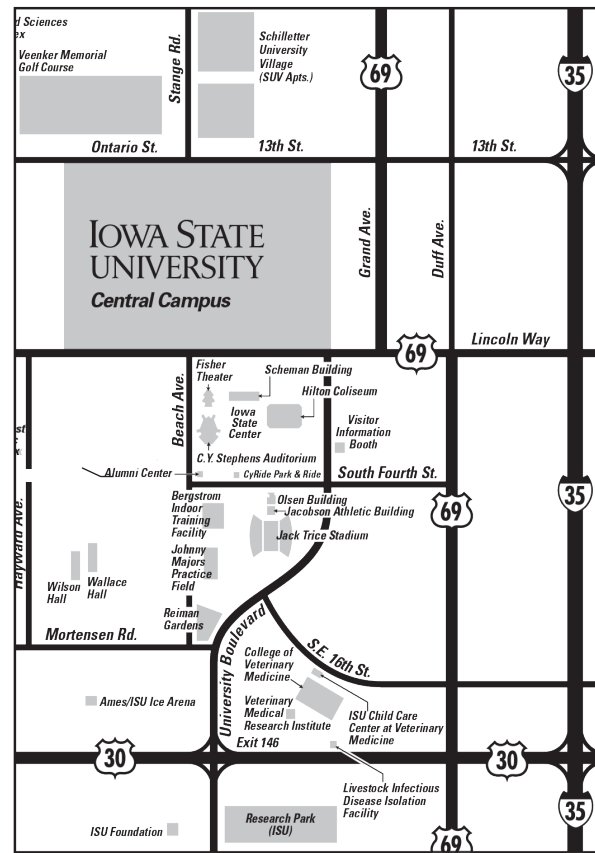


IOWA STATE UNIVERSITY

Travel Instructions to Iowa State University

If you travel to Ames via Interstate 35:

- Take Exit 111B, labeled “30 West,” and travel west on Highway 30 to Exit 146, labeled “University Boulevard.”
- Take Exit 146 and turn north onto University Boulevard. Continue on University Boulevard past the football stadium and the Iowa State Center to the fourth traffic light (Lincoln Way).
- At the fourth traffic light, turn left (west) onto Lincoln Way.
- Follow Lincoln Way to Ash Avenue (the third traffic light).
- Continue through this intersection (Lincoln Way and Ash Avenue) to the first driveway on your right. This is the entrance to the Memorial Union parking ramp. Please retrieve a ticket from the machine when entering the ramp. Take this ticket with you in order to get it validated when you check in.
- Once you have parked in the ramp, take the elevator or stairs located on the west side of the ramp to Level P2. Use the map on the reverse side to reach your program destination.



Alternative parking option:

From the exit of the Memorial Union parking ramp:

If the parking ramp in the Memorial Union is full after entering, continue out of the parking ramp and turn right (East) on to Union Drive at the first stop sign. At the intersection of Union Drive and Lincoln Way, turn left (East) on to Lincoln way towards Beach Avenue. Turn right (South) on Beach Avenue and then turn left (East) once you reach the 4-way stop on to South 4th St.

You will find additional parking in the Commuter Lot at Iowa State Center located to the left of Jack Trice Stadium. Parking is available along Alumni Ln in lots A3, A4, B4, B5, B6, C5, and C6. After parking, you can wait at the CyRide Park and Ride (Campbell Transit Hub). Orange 23 (free bus route) will take you back to central campus. There will be a bus stop just out front of the Memorial Union between the campanile and fountain. Then proceed back to the Memorial Union for your program.

Feel free to download the MYSTATE App for more information, CyRide updates, and campus maps.

